

# shaw contract group®

commercial flooring

suelo comercial

revêtements de sol commerciaux

At Shaw Contract Group, we believe that innovative design inspires change. The way we live, work, think, create and heal—all made better by design. As a global design leader for commercial spaces, Shaw Contract Group carpet and floorcovering products are engineered for beauty, durability and cradle-to-cradle sustainability. As part of Shaw Industries, the world's largest carpet manufacturer and a Berkshire Hathaway subsidiary, our strength and dedication have brought our brand of design to more than 80 countries around the world. We ensure global consistency in quality and performance—regardless of where our products are manufactured.

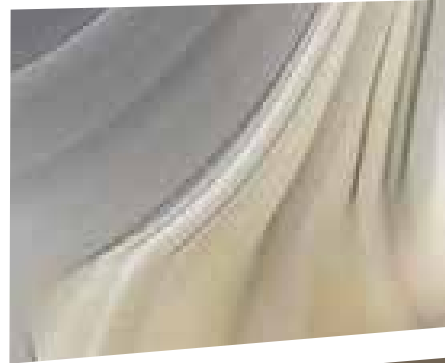
---

DESIGN IS A GLOBAL CONVERSATION

# TABLE OF CONTENTS

## DESIGN IS STRENGTH..... 4

Shaw Contract Group checks every step in the product manufacturing process in order to ensure quality and service. As a Berkshire Hathaway subsidiary, and the world's largest carpet manufacturer, we are a company like no other in the world.



## DESIGN IS INSPIRED..... 12

When inspiration meets innovation, the result is award-winning products, year after year. Based on research, trends, and industry expertise, our inspired collections have a big impact—from wayfinding and branding to recruiting and retaining talent.



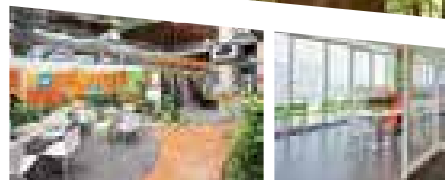
## DESIGN IS SUSTAINABLE..... 28

Driven by environmental stewardship and social responsibility, we design with future impact in mind. As the largest carpet recycler in the industry and the first flooring manufacturer with *Cradle to Cradle Certified*<sup>CM</sup> products, we lead through innovative, sustainable practices.



## DESIGN IS GLOBAL..... 36

With more than 130 million square metres of EcoWorx<sup>®</sup> installed in more than 80 countries, Shaw Contract Group maintains valued relationships with many of today's most respected companies. Our carpet is featured in millions of projects across the globe.









“WE HAVE STAYED TRUE  
TO OUR COMMITMENT  
TO CREATING THE  
MOST BEAUTIFUL AND  
SUSTAINABLE FLOORING  
IN THE WORLD, AND  
WE BELIEVE THAT OUR  
ONGOING INVESTMENT  
IN GROWTH AND  
SUSTAINABILITY INITIATIVES  
IS KEY TO THE FUTURE  
CREATION OF VALUE FOR  
OUR CUSTOMERS.”

VANCE BELL  
CEO • Shaw Industries

# DESIGN IS STRENGTH

## 18th ON THE FORTUNE GLOBAL 500 LIST

...ch Shell • Wal-Mart Stores • Exxon Mobil • Sinopec Group • China National Petroleum • BP • State Grid • Toyota Motor • Volkswagen • Total • Chevron  
...cs • E.ON • Phillips • ENI **Berkshire Hathaway** • Apple • AXA • Gazprom • General Motors • Daimler • General Electric • Petrobras • EXOR Gro  
...cial Bank of China • Hon Hai Precision Industry • Allianz • Nippon Telegraph & Telephone • ING Group • AT&T • Pemex • GDF Suez • PDVSA • Statoil  
... • JX Holdings • Honda Motor • Lukoil • Nissan Motor • Verizon Communications • Assicurazioni Generali • China Construction Bank • UnitedHealth  
...rdinal Health • SK Holdings • Banco Santander • Carrefour • HSBC Holdings • Société Générale • International Business Machines • Tesco • Agricultu  
...Wholesale • BMW • Nestlé • Bank of China • China Mobile Communications • Kroger • Crédit Agricole • Express Scripts Holding • Petronas • Noble G  
... • China State Construction Engineering • PTT • Archer Daniels Midland • Panasonic • Prudential • Lloyds Banking Group • Nippon Life Insurance • M  
...al Financial • ArcelorMittal • Munich Re Group • China National Offshore Oil • Sony • Boeing • Freddie Mac • Telefónica • AmerisourceBergen • Rosne  
...n Petroleum • China Railway Group • SAIC Motor • Hyundai Motor • Deutsche Telekom • Home Depot • Reliance Industries • Deutsche Post • Aviva •  
...EADS • BHP Billiton • Banco do Brasil • Tokyo Electric Power • Mitsubishi • Sinochem Group • Walgreen • Peugeot • Pertamina • Zurich Insurance Gr  
...onal Group • Toshiba • AEON • INTL FCStone • MetLife • Deutsche Bank • Robert Bosch • Johnson & Johnson • Groupe BPCE • China Southern Po  
... State Farm Insurance  
... China FAW Group • D  
... ConocoPhillips • Co  
... WellPoint • Pfizer • A  
... Aegon • Groupe Auc  
... Technologies • Thys  
... Mærsk Group • Amé  
... Marubeni • China No  
... Mitsubishi UFJ Finan  
... Insurance • Dell • Dov  
... Bradesco • CNP Ass  
... Saint-Gobain • CITIC  
... Itochu • Foncière Eur  
... Group • United Parce  
... Ping An Insurance  
... Mitsui Financial Gro

### SHAW INDUSTRIES: A BERKSHIRE HATHAWAY COMPANY SINCE 2001

Dominant market share, strong management team and commitment to innovation and quality led to Berkshire Hathaway's 2001 acquisition of Shaw, giving us financial strength unlike any other company in the flooring industry. Now, Berkshire Hathaway is among the top of Fortune magazine's lists of largest global corporations and most admired companies.

In the past five years, Shaw has have invested more than USD 1 billion in innovation while maintaining zero debt. The result: single source accountability and a commitment to meet your needs today and tomorrow.



**WARREN BUFFETT**  
Chairman and CEO  
Berkshire Hathaway

...mo Metal • Fujitsu • China Resources National • UniCredit Group • Google • Sumitomo  
...a Argentaria • Bayer • Rio Tinto Group • China Post Group • Roche Group • Lowe's • Deutsche Bahn • Sumitomo Life Insurance • Sabic • ACS • Vinci  
...ies • Commonwealth Bank of Australia • Coca-Cola • China South Industries Group • Vale • Royal Bank of Scotland Group • Aviation Industry Corp.  
...g • Tokio Marine Holdings • Sanofi • Cisco Systems • Intesa Sanpaolo • Baosteel Group • LyondellBasell Industries • Wilmar International • LG Electro  
...la • Korea Electric Power • Canon • Westpac Banking • SNCF • GS Caltex • Bouygues • Schlumberger • Denso • Bank of Communications • Mitsubis  
...ls • Kia Motors • GlaxoSmithKline • Goldman Sachs Group • Credit Suisse Group • People's Insurance Co. of China • Softbank • China United Netwo  
...a Environnement • Jardine Matheson • DuPont • ABB • HeBei Iron & Steel Group • Humana • Lufthansa Group • World Fuel Services • Aluminum Cor  
...Royal Bank of Canada • Bridgestone • Centrica • Ingram Micro • Plains All American Pipeline • Honeywell International • Christian Dior • Vivendi37 • M  
... • NEC • Liberty Mutual Insurance Group • PKN ORLEN Group • State Bank of India • China Guodian • J. Sainsbury • • HCA Holdings • China Metal  
...ho Financial Group • Mondelez International • Huawei Investment & Holding • Tata Motors • Franz Haniel • Jiangsu Shagang Group • China National  
...Holdings • Sinomach • Mitsubishi Heavy Industries • Wuhan Iron & Steel • Lenovo Group • Medipal Holdings • American Express • News Corp. • L.M  
...of Canada • Massachusetts Mutual Life Insurance • Tewood Group • George Weston • Cosmo Oil • Old Mutual • Royal Philips • Tesoro • La Poste • Mo  
...SP International • Greenland Holding Group • Xstrata • General Dynamics • Philip Morris International • Hutchison Whampoa • Zhejiang Materials Indu  
...ider Electric • Shandong Energy Group • Aisin Seiki • Standard Life • China Datang • Nationwide • Toronto-Dominion Bank • Formosa Petrochemical  
... • China Huadian • Shanxi Coal Transportation & Sales Group • Delhaize Group • T&D Holdings • Cigna • BT Group • China Electronics • L'Oréal • Wr  
... • Henan Coal & Chemical • Mapfre Group • Xinxing Cathay International Group • Yangquan Coal Industry Group • China Power Investment • Coop  
...tional Paper • China Shipbuilding Industry • Publix Super Markets • Macy's • Ultrapar Holdings • Michelin • Fluor • McDonald's • Onex • Phoenix Pha  
... Group • Shell Global Solutions E

From the onset, our differentiating strategy has been to build a vertical supply chain to better control company processes so we can be a more effective supplier to our customers. Within this framework, every investment in property, plant, equipment, technology and personnel is given thoughtful consideration.

on • Glencore Xstrata • Japan Post Holdings • Samsung  
 up • Valero Energy • Ford Motor • Industrial &  
 • CVS Caremark • BNP Paribas • McKesson • Hewlett-  
 Group • Enel • Siemens • Hitachi • J.P. Morgan Chase &  
 aral Bank of China • BASF • Bank of America Corp. •  
 roup • Électricité de France • Wells Fargo •  
 Metro • Indian Oil • Procter & Gamble •  
 ft Oil • China Railway Construction •  
 • Microsoft • China Life Insurance • Repsol •  
 oup • Vodafone Group • American  
 wer Grid • Unilever • Caterpillar • PepsiCo •  
 e Cos. • RWE • U.S. Postal Service •  
 Dai-ichi Life Insurance • Bunge •  
 ncast • Dongfeng Motor Group •  
 amazon.com • Seven & I Holdings •  
 an • Wesfarmers • United  
 enKrupp • Mitsui • A.P. Møller-  
 rica Móvil • Woolworths •  
 rth Industries Group • Novartis •  
 icial Group • Meiji Yasuda Life  
 w Chemical • POSCO • Banco  
 urances • France Télécom •  
 Group • Legal & General Group •  
 is • OMV Group • Barclays • Shenhua  
 l Service • Landesbank Baden-Württemberg •  
 China Telecommunications • Intel • Renault • Nippon Steel &  
 p • MS&AD Insurance Group Holdings • China Minmetals • Banco Bilbao  
 • International Petroleum Investment • National Australia Bank • Hyundai Heavy  
 of China • China Communications Construction • Merck • Idemitsu Kosan • Lockheed Martin • Koç  
 nics • Best Buy • Volvo • Sberbank • Bharat Petroleum • SSE • China Huaneng Group • Safeway • KDDI •  
 shi Electric • FedEx • Enterprise Products Partners • Sysco • Walt Disney • Royal Ahold • Continental • Johnson  
 rk Communications • CHS • Hindustan Petroleum • Abbott Laboratories • Sears Holdings • UBS • Anheuser-Busch InBev  
 p. of China • Nokia • JBS • Suncor Energy • China National Aviation Fuel Group • JFE Holdings • Hess • Ecopetrol • Telecom  
 Mitsubishi Chemical Holdings • Australia & New Zealand Banking Group • China Railway Materials • United Continental Holdings •  
 lurgical Group • Delta Air Lines • Aetna • CPC • Sumitomo • Deere • Sistema • Alliance Boots • Sprint Nextel • Jizhong Energy Group  
 Building Materials Group • Kansai Electric Power • Quanta Computer • Shougang Group • Supervalu • New York Life Insurance •  
 . Ericsson • Swiss Re • DZ Bank • Beijing Automotive Group • Allstate • Tyson Foods • Edeka Centrale • Air France-KLM Group • Power  
 rgan Stanley • East Japan Railway • TIAA-CREF • Gas Natural Fenosa • Power China • ChemChina • Chubu Electric Power • COFCO •  
 ustry Group • Korea Gas • Itaúsa-Investimentos Itaú • Suzuki Motor • Poste Italiane • Oil & Natural Gas • Magna International • S-Oil •  
 • GasTerra • Manulife Financial • 3M • Sharp • Pegatron • Accenture • DirecTV • Amer International Group • Shandong Weiqiao Pioneering  
 n. Morrison Supermarkets • Murphy Oil • Anglo American • Alfrexa Holdings • China Ocean Shipping • Time Warner • Shanxi Coking Coal  
 Group • Halliburton • China Minsheng Banking Corp. • China Merchants Bank • AstraZeneca • Jiangxi Copper • Kailuan Group •  
 rmahandel • Hyundai Mobis • Samsung Life Insurance • Industrial Bank • China Pacific Insurance (Group) • Shanxi LuAn Mining Group •  
 Fujifilm Holdings • Micros Group • Compass Group • Mazda Motor • BAE Systems • Hartford Financial Services Group • Adecco Group

SOMEONE IS  
 SITTING IN THE  
 SHADE TODAY  
 BECAUSE  
 SOMEONE  
 PLANTED A  
 TREE A LONG  
 TIME AGO.”

WARREN BUFFETT  
 Chairman and CEO • Berkshire Hathaway



# WE CONTROL THE ENTIRE LIFE CYCLE OF THE PRODUCTS WE CREATE

Shaw Contract Group controls the products we create every step of the way to reduce risk, reduce turnaround time, and ensure the highest quality standards without relying on outside vendors. Maintaining a leadership position at each point of the production process, we produce more than 815,000 metric tonnes of carpet and 450,000 metric tonnes of fibre each year.

This vertical integration gives us control over where, when and how to make product and process improvements, ensures our continuous investment in innovation and gives us single source accountability with each and every customer we serve. In the annual Floor Focus Survey of Facility Managers and Designers, **Shaw Contract Group is consistently recognised as Best Overall Business Experience.** According to Facility Managers, we rank first in service, quality, design, performance and value. And among designers, Shaw Contract Group is ranked first in service, quality, design and value.



WORLD'S LARGEST CARPET FIBRE PRODUCER

WORLD'S LARGEST CARPET MANUFACTURER

“ULTIMATELY, THE LEADERS AT SHAW EXUDED THE COURAGE AND CONVICTION TO BUILD A SUSTAINABLE PRODUCT PLATFORM THAT WOULD CREATE A COMPETITIVE ADVANTAGE. NOT ALL COMPANIES ARE WILLING TO MAKE SUCH A BET.”

HARVARD BUSINESS REVIEW



BEIJING • CHICAGO •  
GUADALAJARA •  
HONG KONG • LONDON •  
LOS ANGELES •  
MELBOURNE • MEXICO CITY •  
MIAMI • MONTERREY •  
NANTONG • NEW YORK •  
SAN FRANCISCO • SHANGHAI •  
SINGAPORE • SYDNEY



Shanghai Showroom



London Showroom

## GLOBALLY CONSISTENT PRODUCT, BACKED WITH LIFETIME GUARANTEE

With showrooms, sales offices and manufacturing facilities around the globe, we are able to nimbly offer the widest array of products available in a range of options for our worldwide customers. And whether products are manufactured in the United States or Nantong, China, the highest standards apply—consistent in quality and design, guaranteed for life.



Nantong Showroom



Chicago Showroom



Mexico City Showroom



Nantong Plant



“OUR APPROACH  
TO DESIGN IS  
INSPIRED. WE ARE  
CONSTANTLY  
EVOLVING THE  
WAY WE LOOK AT  
SHAPE, COLOUR,  
TECHNIQUE,  
MATERIALS.”

REESE DUNCAN  
Creative Director • Shaw Contract Group

# DESIGN IS INSPIRED



## BRANDS THAT INSPIRE

Contract Magazine, a leading publication for commercial architects and interior designers, asked readers to name the most inspiring industry brands. Shaw Contract Group was among the top ten, and the only carpet company to make the list. We're honoured to be in such great company.\*

3FORM

ARMSTRONG

HAWORTH

HERMAN MILLER

IZZY+

KNOLL

MAHARAM

**SHAW CONTRACT GROUP**

STEELCASE

TEKNION

\*CONTRACT MAGAZINE, DEC. 2012, THE BRAND REPORT

Inside our design studios, we immerse ourselves in research and the process of discovery. We ask, we wonder, we design. We collaborate as a team—knowledge is shared, techniques are developed, and products are created to meet the broadest range of design and budget requirements.







## COLOUR EXTRACTED FROM NATURE DREW US IN

An exploration of natural dyes derived from rust, logwood and madder root. The results were unpredictable, the nuances random. And along the way, the design team discovered that there is triumph through adversity.

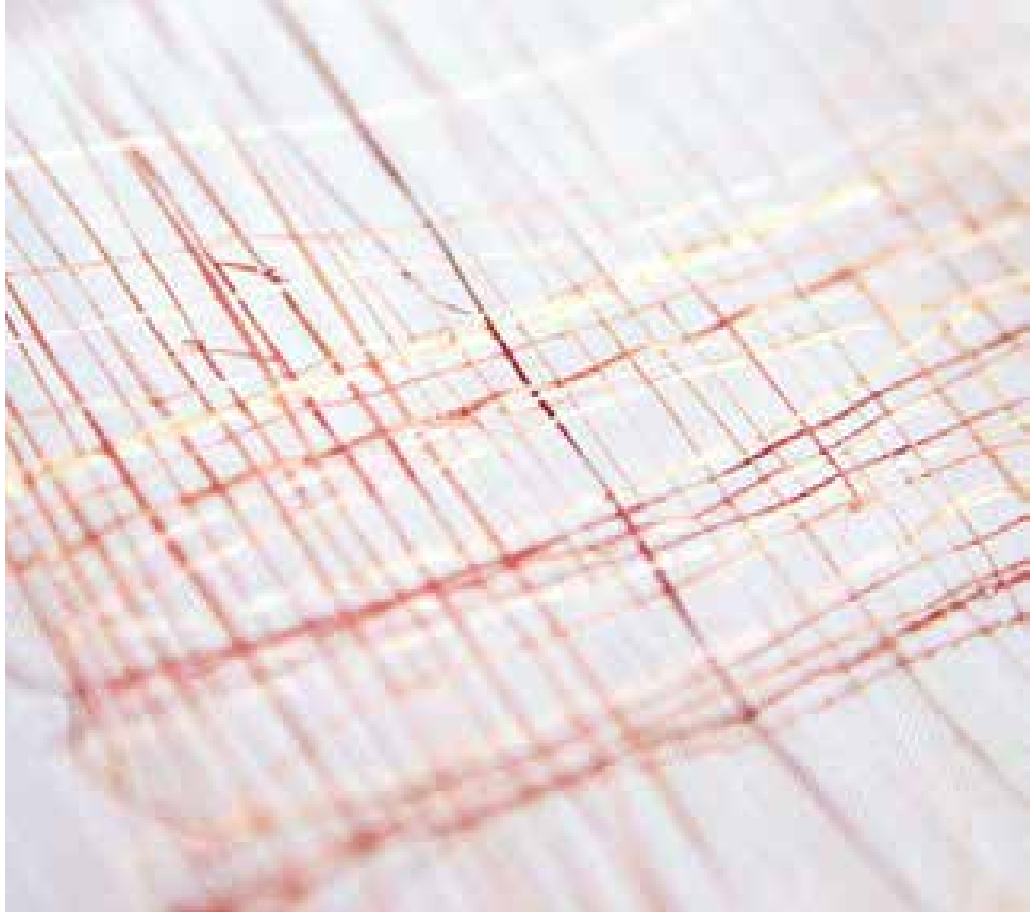




# DyeLab

NATURAL PALETTE





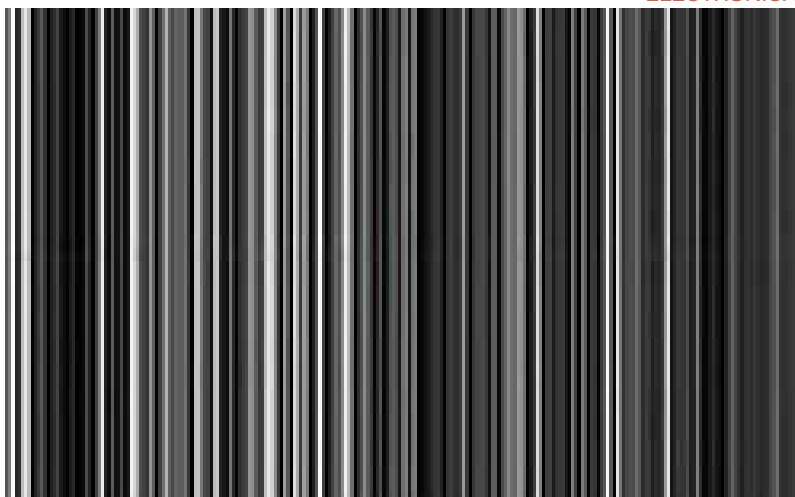
## MAKE A VIBRANT DISCOVERY

The Natural Palette collection is inspired by the winning submission from a design contest hosted in conjunction with the Savannah College of Art and Design. A student's fascination and memory of Costa Rican farmers making rope from the Cabuya fibre resulted in a top-selling commercial carpet. The collection also featured new tufting technology and innovative dye processes. Inspiration is everywhere, in the process and the product.

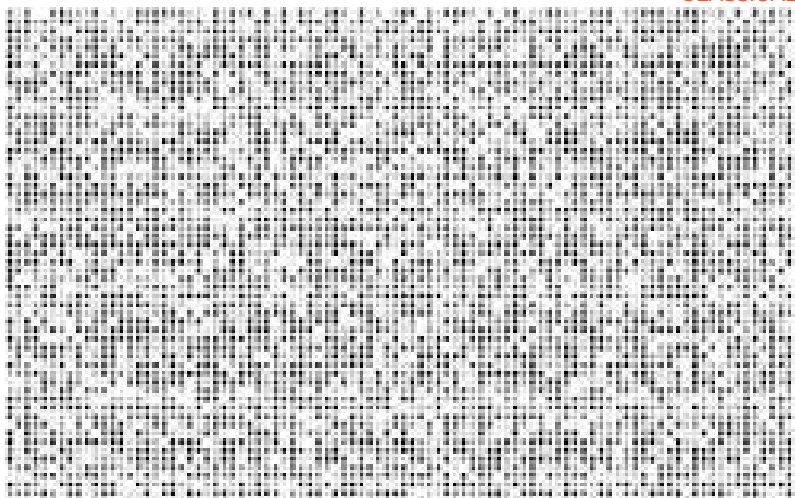




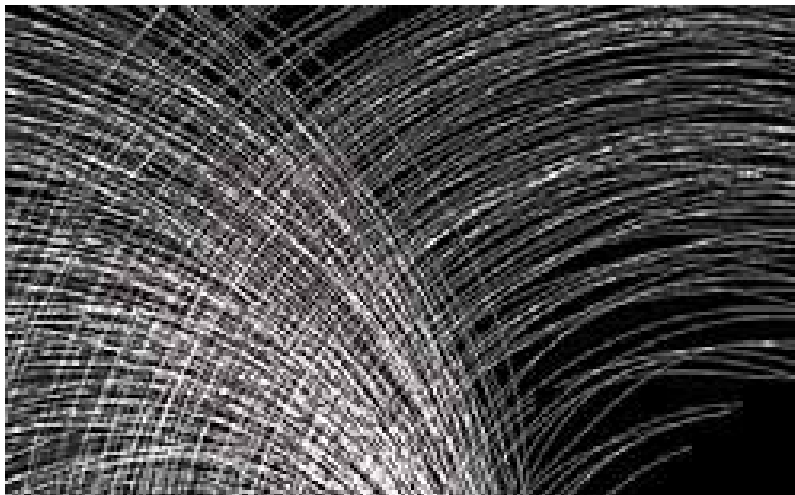
ELECTRONICA



CLASSICAL



AMBIENT



JAZZ

## WHAT DOES MUSIC LOOK LIKE?

The Music Project is a visual interpretation of the universal language of music, a harmony of sound, design and science. The collection engaged a web of disciplines: world renowned designer Todd Bracher, a team of software engineers, the sounds of musicians and the Shaw Contract Group Design Studio. Each product, like the music it reflects, is designed to have a relationship with the individual in a space. *Pictured: Algorithm interpretations set the tone for the collection's genres.*



# THE MUSIC PROJECT

A TODD BRACHER COLLABORATION



# COLLIDE

18X36



## NATURAL OPPOSITION

Inspired by colliding patterns, splits and fractures in nature, Collide represents the push and pull of two opposing forces. With earthy styles liberated upon impact, the collection yields a truly visual collision of pattern and colour. Fractured earth, molten movement, energy unbound.

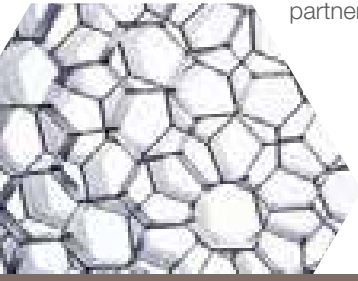






## THERE ARE SIX SIDES TO EVERY CONNECTION

Hexagon reflects cultural trends toward more collaborative environments, influencing the ways we work, walk, communicate and create—together. To illustrate the connectivity of the collection, we teamed up with top designers who network to bring people, minds and causes together, connecting research in the Global North and South for collective, monumental impact. Their dynamic installations reinforce the social aspect of a space, fueling partnerships and idea-sharing.





HEXAGON

## AWARD-WINNING DESIGN

Our product design team travels the globe seeking visual experiences to yield thought-provoking designs that resonate with all market segments. Each year, we unveil our new collections at NeoCon, one of the world's largest design expositions and conferences for commercial interiors—featuring more than 700 showrooms and exhibitors and attended by more than 40,000 architecture and design professionals from more than 70 countries. As testament to our strategy, for more than a decade, we have amassed an unrivaled collection of consecutive Best of NeoCon awards.





best of  
NeoCon  
2010



best of  
NeoCon  
2011



best of  
NeoCon  
2013  
presented by  
contract





“WE RECOGNISE THE  
NATURAL WORLD AS  
THE UNRIVALED MODEL  
FOR HUMAN DESIGNS.”

WILLIAM MCDONOUGH

Founding Principal • William McDonough + Partners  
Author of Cradle to Cradle: Remaking the Way We Make Things

# DESIGN IS SUSTAINABLE



More than 300 Shaw Contract Group products are *Cradle to Cradle Certified<sup>CM</sup>* and are among the first to earn NSF140 Platinum status. Expertly assessed and evaluated, Cradle to Cradle certification is based upon renewable energy, clean water, material health, social responsibility and material reutilisation. The goal is that every material, manufacturing process, and emission is designed to feed another process and eliminate waste.

More than 90% of the Shaw Contract Group product portfolio is *Cradle to Cradle Certified<sup>CM</sup>*, including:

**eco#worx**<sup>®</sup> tile

**eco#worx**<sup>®</sup> broadloom

**eco#worx**<sup>®</sup> performance broadloom

**eco#solution Q**<sup>®</sup>

Tek**lok**

Classic**bac**

Ultra**loc** Pattern

Engineered Hardwood

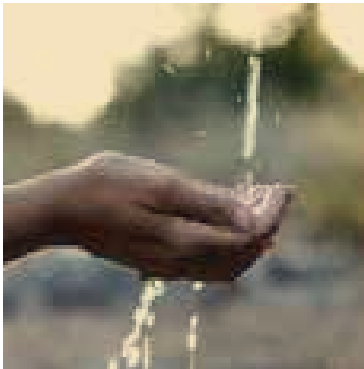
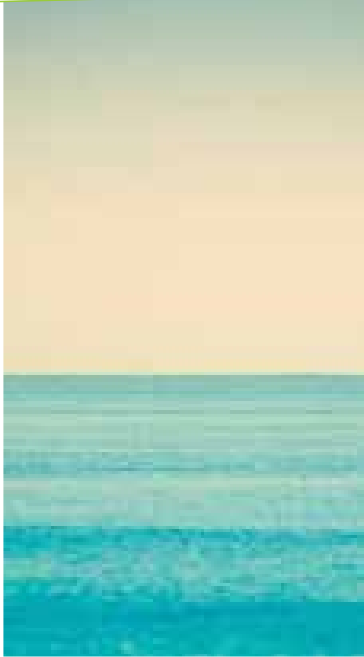
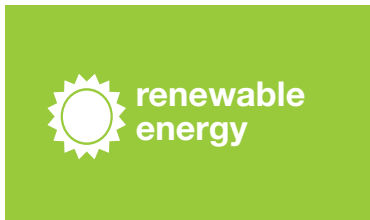
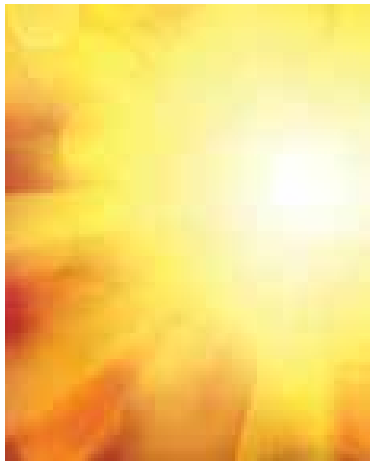
**Lok#Dots**  
by Shaw



material  
reutilisation



When Shaw boldly endeavoured to make the world's first *Cradle to Cradle Certified*<sup>CM</sup> flooring, it was the first of many brave steps toward environmental stewardship and social responsibility. Today, we design with future impact in mind, creating products made from responsible materials, and ensuring viable options for reclamation and recycling or reuse of those products at the end of their useful lives.





# GUARANTEED RECLAMATION

FROM THE WORLD'S LARGEST CARPET RECYCLER



## LokDots™

### YOUR EFFICIENT INSTALLATION PARTNER

LokDots pressure-sensitive adhesive for EcoWorx carpet tile, a *Cradle to Cradle Certified™* installation system, is non-toxic and odorless, virtually eliminating the issue of Volatile Organic Compounds (VOCs), and providing ease and versatility of installation. Compared to traditional wet adhesive, LokDots weighs 97% less, reducing carbon footprint.

## ecoWorx®

### HIGH-PERFORMANCE, PVC-FREE

A high-performance backing system for tile, broadloom and performance broadloom. 100% PVC and Bitumen-free, and closed loop recyclable—meaning zero waste. Lighter and more flexible than traditional backing means easy installation and more fuel efficient shipping. At the end of its useful life, we will pick up any EcoWorx product and recycle it into new product. 4,200 square metres or greater from any international port—free of charge. That's our Environmental Guarantee.



# GLOBAL CERTIFICATIONS & STANDARDS



## eco solution Q<sup>®</sup>

### A PREMIUM FIBRE THAT IS COMPLETELY RECYCLABLE

Our premium branded nylon utilises more than 18,000 metric tonnes of recycled content annually. Eco Solution Q uses 40% less energy than fibre made exclusively with virgin materials. After reclamation, old Eco Solution Q is taken to Evergreen, the world's largest type 6 nylon recycling facility, where nylon is recovered and new fibre can be made that is indistinguishable from first generation material.

## LEED: BUILDING GREENER



All Shaw Contract Group products contribute to LEED—a green building system that addresses the entire lifecycle of best-in-class building.

Our products contribute to the rating system through the use of recycled content, adherence to stringent indoor air quality standards, and Cradle to Cradle and NSF 140 certification. Our comprehensive recycling programme also contributes to the LEED construction and waste management criteria.

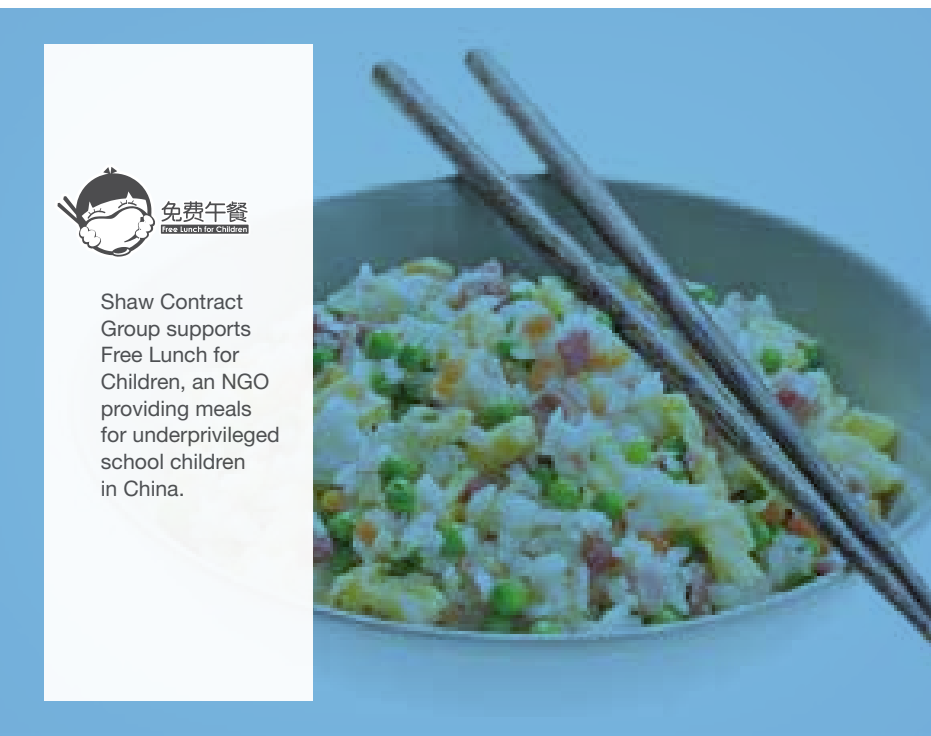
# SOCIAL RESPONSIBILITY BY DESIGN

We are every bit as passionate about social responsibility as we are about the design of our products. We help make the world a better place, from charitable donations and scholarship funding, to support of design summits and immersive research projects that improve health and economic outcomes.



## MAKE IT RIGHT

Shaw is helping the Make it Right Foundation, an organisation founded by Brad Pitt, to rebuild New Orleans, USA after Hurricane Katrina, donating sustainable flooring in affordable, eco-conscious homes.



免费午餐  
Free Lunch for Children

Shaw Contract Group supports Free Lunch for Children, an NGO providing meals for underprivileged school children in China.



## THE 1%

One percent of all profits from the Homage collection go to Public Architecture's The 1% Programme, providing pro bono architecture and design services.



## MASS LAB

Impact has an address.

Shaw Contract Group supports MASS Design Lab in an immersive research laboratory impacting the way we design product and solutions for healthcare, with projects in Rwanda and Haiti.





unicef 

Shaw Contract Group has provided support to UNICEF for earthquake relief efforts in Ya'an, China.



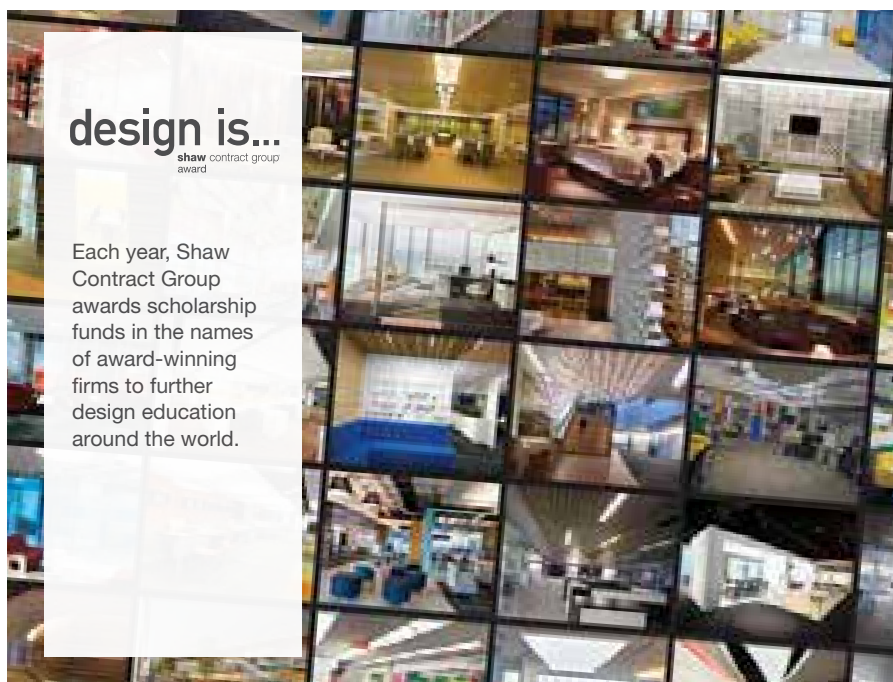
 Panels for Progress

Shaw helped provide sustainable energy to an orphanage in Chiang Rai, Thailand through Panels for Progress, an organisation that installs community solar projects in developing countries.

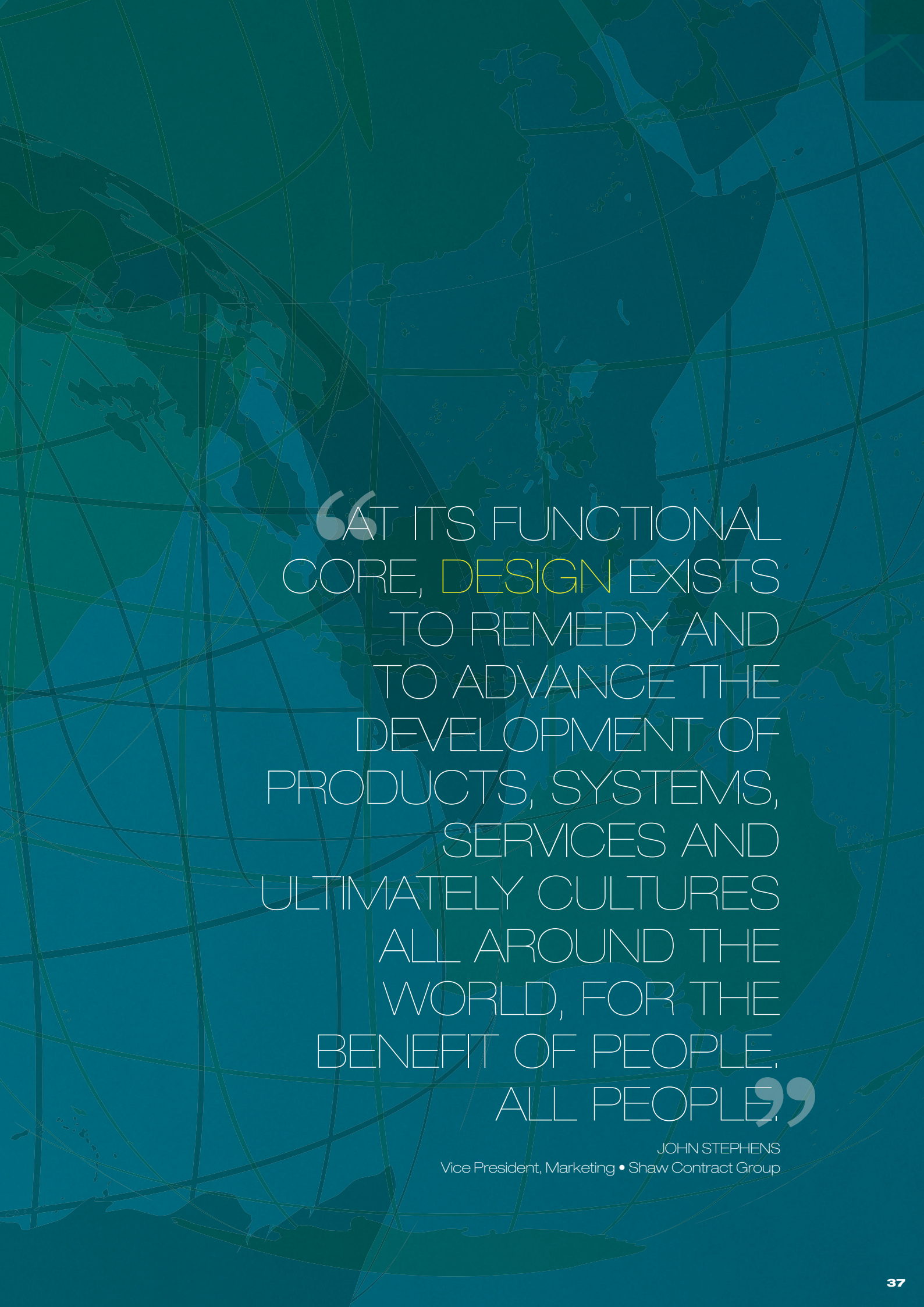


design is... shaw contract group award

Each year, Shaw Contract Group awards scholarship funds in the names of award-winning firms to further design education around the world.







“AT ITS FUNCTIONAL  
CORE, DESIGN EXISTS  
TO REMEDY AND  
TO ADVANCE THE  
DEVELOPMENT OF  
PRODUCTS, SYSTEMS,  
SERVICES AND  
ULTIMATELY CULTURES  
ALL AROUND THE  
WORLD, FOR THE  
BENEFIT OF PEOPLE.  
ALL PEOPLE.”

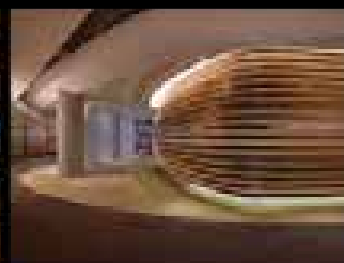
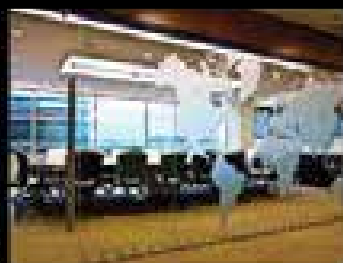
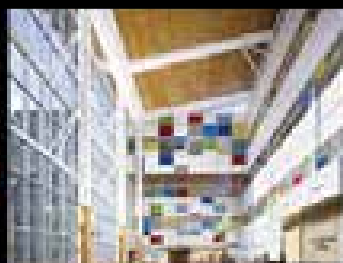
JOHN STEPHENS  
Vice President, Marketing • Shaw Contract Group

# DESIGN IS GLOBAL

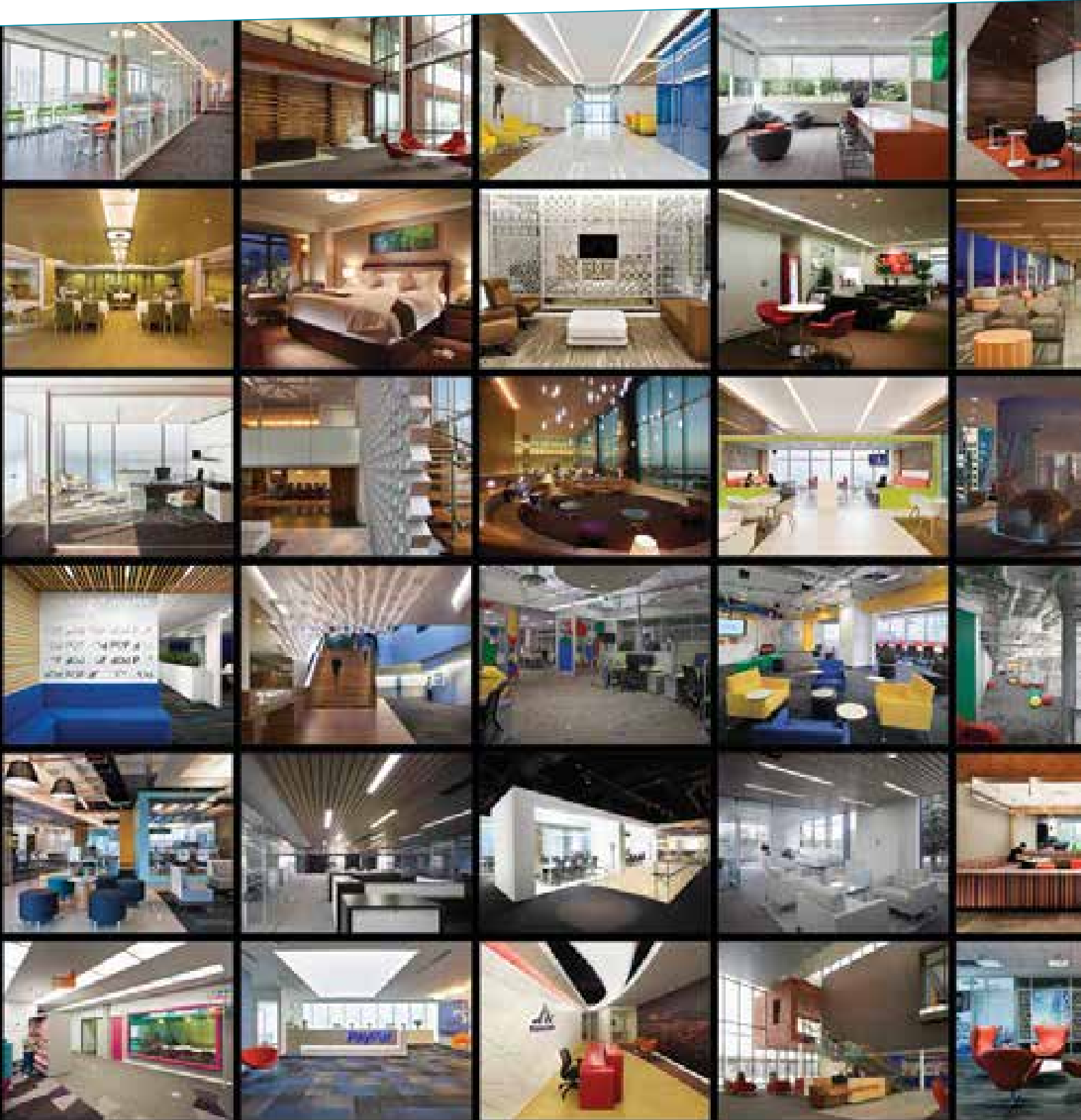


## SHAW CONTRACT GROUP PRODUCTS PERFORM IN MILLIONS OF PROJECTS AROUND THE GLOBE

Our products are installed in offices, schools, hospitals, airports, hotels and managed properties across more than 80 countries. Each year, we honour the highest calibre of design with our Design is...Award Programme, recognising commercial projects from all over the world—spaces that redefine the very idea of what design is.



At Shaw Contract Group, we deliver innovative designs for all market segments, with the expertise to serve projects of any scope. Our customer service continues long after the purchase, including the point you are ready to recycle. We define our brand by great product design, and a commitment to sustainability and innovation—giving shape to the future of design.







fade tile

Clifford Chance | Singapore | Space Matrix



design is...  
shaw contract group  
award

trace tile



prisma tile

Sir Moses Montefiore Aged Care Home | Sydney, Australia | Gilmore Interior Design



slice tile



12square tile + 24square



natural selection

design is...  
shaw contract group  
award



repartee tile



design is...  
shaw contract group  
award



visible tile + vibrant tile

Mercedes-Benz | Bangalore, India | Atelier 'D Arts & Architecture



hybrid tile



*man made tile*



*portland tile*



*haven tile*



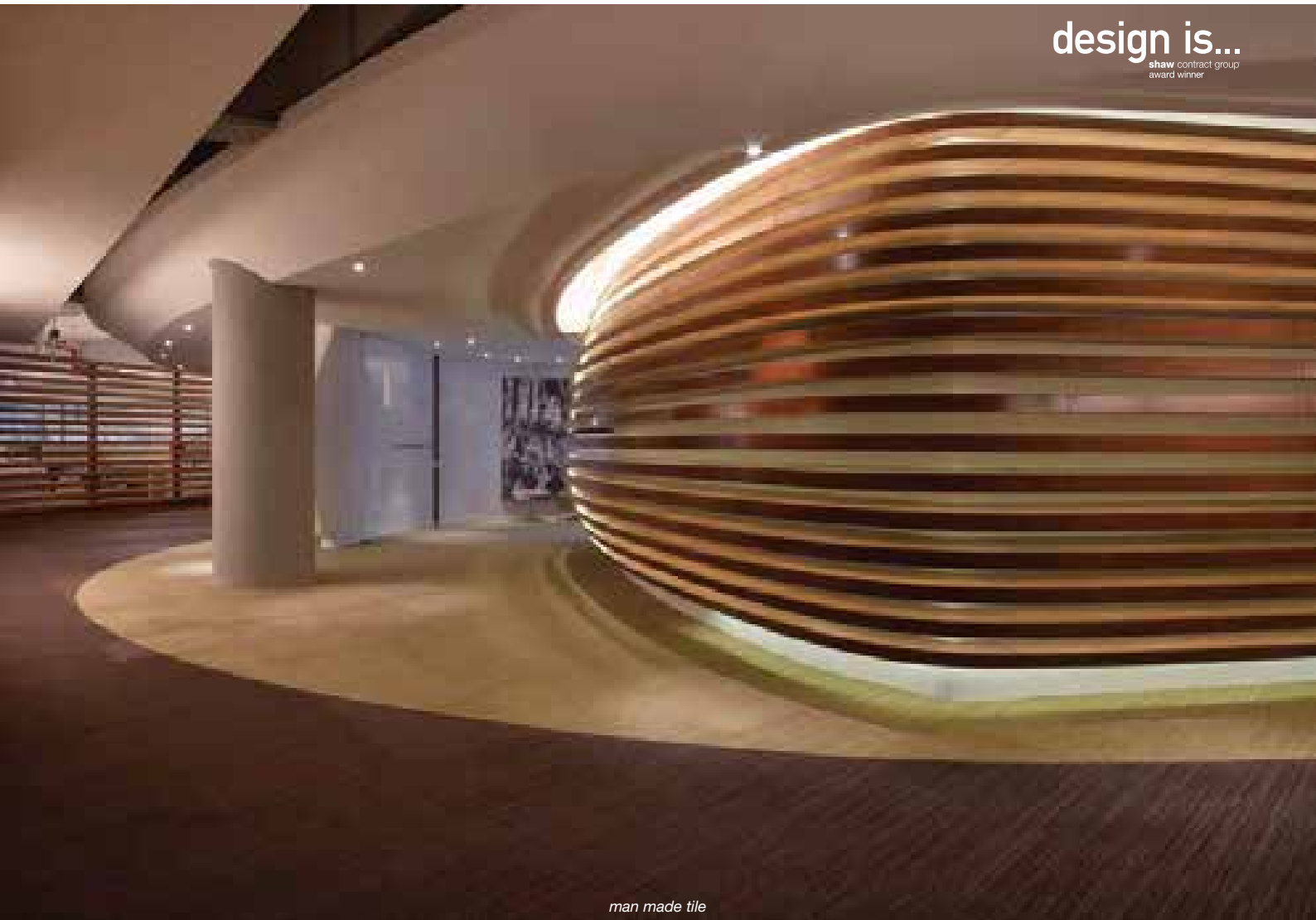
*portland tile*







design is...  
shaw contract group  
award winner



*man made tile*



*bloom tile + man made tile*



link tile + 24square tile

design is...  
shaw contract group  
award winner



transparent tile



*tru colours tile*



*fade tile*



*fade tile + colour plank tile*



*diffuse tile*



*prisma tile + beam of light tile*

design is...  
shaw contract group  
award



prisma tile



*disperse tile*



*captivate tile*



design is...  
shaw contract group  
award



vertical edge tile + minimal tile + colour plank tile

Douglas Park Elementary | Regina, Canada | Number TEN Architectural Group

design is...  
shaw contract group  
award



diffuse tile



shadow tile



spun tile

design is...  
shaw contract group  
award



vivid shadow tile

design is...  
shaw contract group  
award winner



*blur tile*



*blur tile*



*blur tile*

design is...  
shaw contract group  
award winner



*silence tile*



*ambient tile*



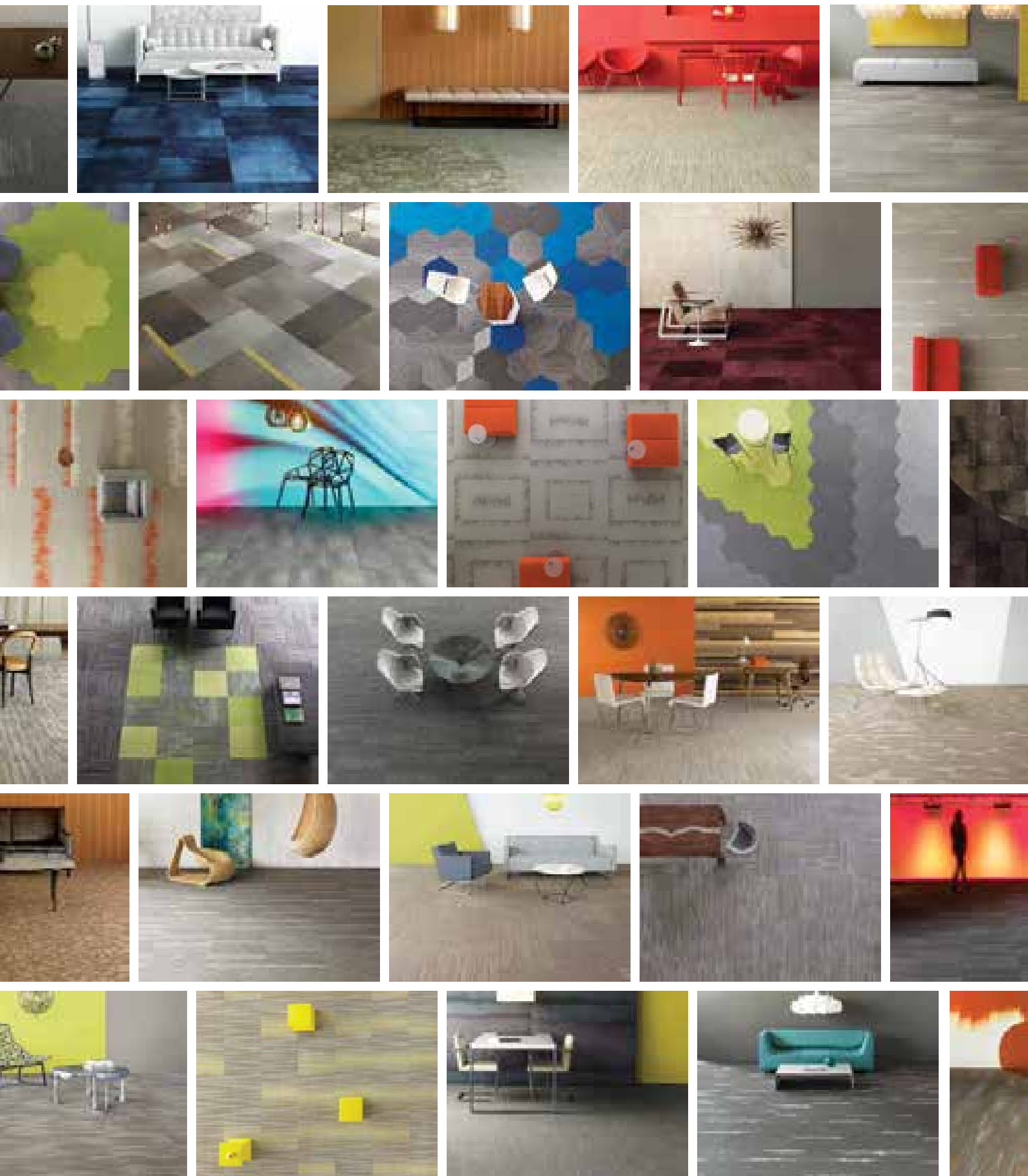
design is...  
shaw contract group  
award winner

custom



design is...  
shaw contract group  
award winner

cross weave



dale globális global globální wereldwijd mondial グローバル evolving evolucionando 不断发展的 entfaltend эволюциониру  
я zmienne in movimento változó a mudar proměnlivý veranderend changeant 変化している scene escena 景象 Szene сце  
癒し changing the world cambiando el mundo 改变世界 die Welt verändernd **меняющий мир** zmienia świat cambiare il mo  
一个新的开始 ein neuer Anfang **новое начало** nowym początkiem un nuovo inizio egy új kezdet um novo começo nový začá  
comunidade komunita gemeenschap communauté コミュニティ collaborative colaborador 协作的 gemeinschaftlich **совместны**  
ús luminoso jasný helder brillant 明るい happy feliz 快乐的 glücklich **счастливый** szczęśliwe felice boldog feliz šťastný gelukl  
réfléchi 思慮深い everywhere en todas partes 到处 überall **повсюду** wszędzie ovunque mindenhol omnipresente všude ov  
transparent 透明 colorful colorido 丰富多彩的 bunt **красочный** kolorowe colorato színes colorido barevný kleurrijk bariolé 九  
dobre buono jó bom dobrý goed bon 良い human kind humanidad 人类 Menschheit **человеческий род** ludzkością genere  
sostenibile fenntartható sustentável udržitelný duurzaam durable 持続可能 green verde 绿色 grün **зеленый** zielone verde  
dalla culla alla culla bölcsőtől bölcsőig regenerativo od kolébky ke kolébce duurzame ontwikkeling du berceau au berceau 以  
rendimiento 性能 Darbietung **представление** wydajnością performance teljesítmény desempenho výkon prestatie perfor  
声音大的 laut **громкий** głośne forte hangos ruidoso hlasitý luid bruyant けたたましい quiet silencioso 安静的 still **тихий** cich  
ta een reis un périple 静か brilliant genial 聰明的 brillant **блестящий** błyskotliwe brillante ragyogó brilhante skvělý briljant écla  
chaîné 拘束されない provocative provocative 刺激的 provokativ **провокационный** prowokacyjne provocative provokáló pro  
pressive expresivo 富有表现力的 ausdrucksvoll **выразительный** ekspresyjne espressivo kifejező expressivo výmluvný expre  
matique **ドラマチック** subtle sùtil 微妙的 subtil **утонченный** subtelne sottile kifinomult subtil nevtíravý subtiel subtil 微妙 soci  
twórcze creativo alkotó criativo kreativní creatief créatif **クリエイティブ** definitive definitive 确定的 definitiv **определяющий** os  
rzális universal univerzální universeel universel 普遍的な seamless perfecto 无缝的 nahtlos **цельный** płynne continuo síma át  
ador inspirující inspirerend inspireteur **インスピレーション**が感じさせる imagination imaginación 想象力 Vorstellungskraft **воо**  
bibile hajlékony flexível pružný London flexibel polyvalent 柔軟な function function 功能 Funktion **функция** funkcją funzione fun  
nt **скульптурный** rzeźbione scolpito faragott esculpido vymodelovaný gebeeldhouwd sculpté すっきりとした形 vital vital 至  
ioso ragyogó radiante zářivý radiant radieux 光り輝く illuminating illuminador 照明 erleuchtend **освещающий** oświetlające illu  
akmanschap artisanat **クラフト** smart inteligente 聰明的 schlau **умный** inteligentne chic ötletes inteligente chytrý slim intellige  
引人的 glamorous **чарующий** czarujące affascinante elbűvölő glamoroso fascinující elegant séduisant 華やかな geometric ge  
calmante 帮助放松的 beruhigend **успокаивающий** kojące calmante nyugataó reconfortante ukliďující rustgevend apaisant 疾  
r adaptable 順応性のある passion passion 激情 Leidenschaft **страсть** pasją passion szenvedély paixão zápal passie passio  
危险的 prickelnd **волнующий** porwijające emozionante izgalmas emocionante vzrušující spannend excitant スリルを感じさせる  
m **удобный** wygodne confortevole kényelmes confortável pohodlný komfortabel comfortable 快適な elegant elegante 优雅的  
monioso čistý schoon propre **クリーン** sound sonido 声音 Klang **основательный** solidne suono hang sólido solidní geluid so  
bal 全球的 global **глобальный** globalne globale globális global globální wereldwijd mondial グローバル evolving evolucion  
cambiando **移动** wechselnd **меняющийся** zmienne in movimento változó a mudar proměnlivý veranderend changeant 変化して  
gyító curativo léčivý genezend curatif 癒し changing the world cambiando el mundo 改变世界 die Welt verändernd **меняющи**  
new beginning un nuevo comienzo 一个新的开始 ein neuer Anfang **новое начало** nowym początkiem un nuovo inizio egy új  
polecznością comunità közösség comunidade komunita gemeenschap communauté コミュニティ collaborative colaborador  
te 明亮的 hell **яркий** jasne vivace derús luminoso jasný helder brillant 明るい happy feliz 快乐的 glücklich **счастливый** szcz  
al teli cuidadoso uvážlivý weldenkend réfléchi 思慮深い everywhere en todas partes 到处 überall **повсюду** wszędzie ovunque  
arente transparentní transparant transparent 透明 colorful colorido 丰富多彩的 bunt **красочный** kolorowe colorato színes col  
d bueno 好的 gut **хороший** dobre buono jó bom dobrý goed bon 良い human kind humanidad 人类 Menschheit **человече**  
стабильный зрбывающий

**shaw contract group**

BEIJING • CHICAGO • GUADALAJARA • HONG KONG • LONDON •  
LOS ANGELES • MELBOURNE • MEXICO CITY • MIAMI • MONTERREY •  
NANTONG • NEW YORK • SAN FRANCISCO • SHANGHAI • SINGAPORE • SYDNEY  
SHAWCONTRACTGROUP.COM | SHAWCONTRACTGROUP.CN